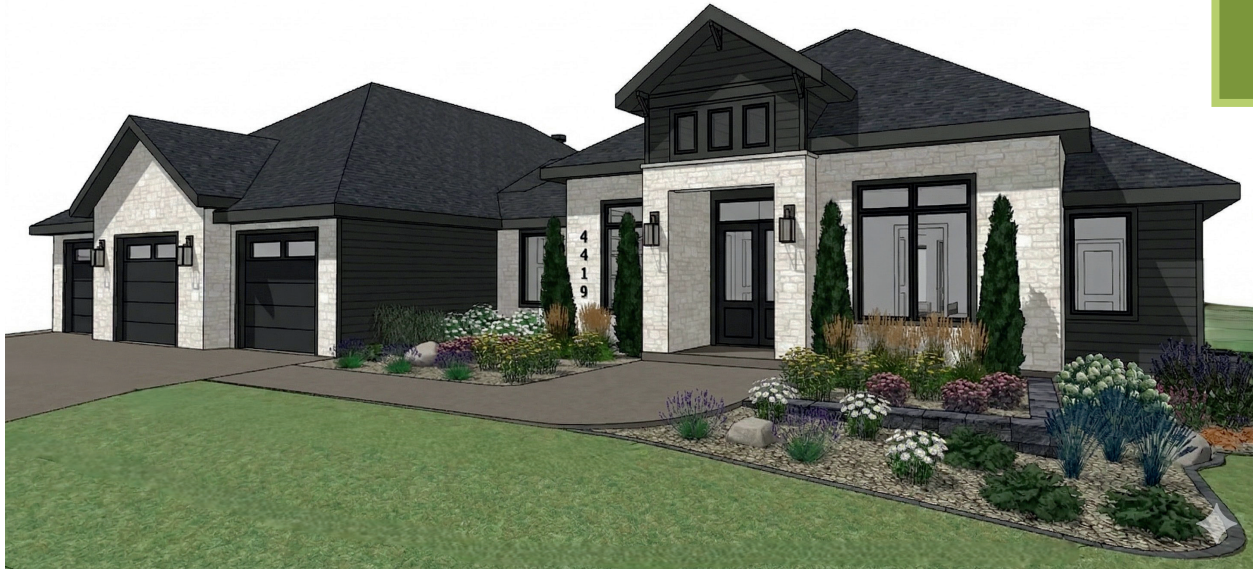


4419 CARTIER AVE

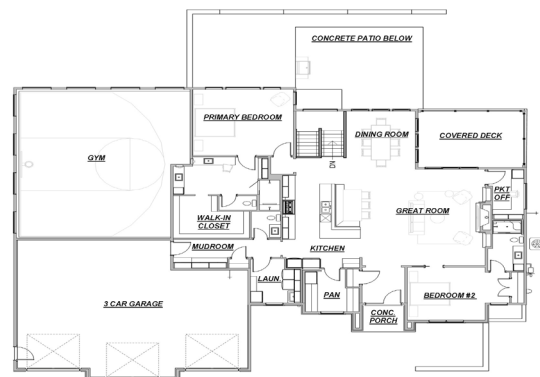
Ames, IA 50014



4 BEDROOMS
6 BATHROOMS
5455 TOTAL SQ FEET
NOT FOR SALE

HOUSE HIGHLIGHTS

- Elegant inset cabinetry with a timeless, high-end finish
- White oak architectural details including beams, stair railing, and fireplace built-ins
- Expansive floor-to-ceiling windows providing abundant natural light
- Color-drenched walls & trim providing a cohesive, immersive effect
- Ambient lighted tray ceilings in the great room and primary bedroom
- Primary bathroom with heated tile floors and walk-in shower
- Fully dedicated home gym, complete with basketball hoop and ballet barre
- Spacious walk-in pantry for organized storage
- Scenic Valley subdivision | approximate lot size 115'x 145'



MAIN LEVEL



BASEMENT

HUNZIKER CONSTRUCTION SERVICES

105 S. 16th Street
Ames, IA 50010
515-233-4450

hunzikerconstruction.com

